

G.S. Marine Services Ltd

your trusted partner...

www.gsmarine.com.cy



► Welcome

G.S. Marine Services has been established in 2008, nearly having 2 decades of experience. With the head office in Limassol Cyprus, the company operates worldwide 24/7 in the following areas:

- Shipping
- Offshore / Oil & gas
- Industrial

Our philosophy for the development and success of G.S. Marine Services is based on the following principles:

- Respect to customers and their needs
- Uncompromised quality services
- Cost and time effectiveness

Quality at G.S. Marine Services is of utmost importance. Company's personnel are highly educated and trained dedicated to serve our clients best interest. We invest in new technologies and training aiming to fulfil our customers' needs in a worth costing and timely manner. Both on site and at office, quality of work is controlled and follows documented procedures as per ISO 9001:2008 standard.

► Lifeboat and Lifeboat Davits Inspections

Our company is authorized from manufacturers, Flag Administrations and Classification Societies to perform Annual and Five year Inspections for lifeboats, Release Gears and launching appliances.

Inspections are carried out in Cyprus and abroad as well.

Inspections, maintenance, repairs and training is done as follows in full compliance with the most recent IMO / SOLAS regulations and according to manufacturer's specifications:

- Annual & 5-Yearly Lifeboats & Davits Inspection
- Maintenance & Repair
- Lifeboats/Rescue boats
- Hook Release systems
- Liferaft Davits and Liferaft Hooks





► Ultrasonic Thickness Measurements (UTM)

Our company is certified by all major IACS members. We carry out inspections and preparation of UTM reports in case of Annual/Intermediate/Special/CAP surveys. Repair specification reports supported with drawings of proposed renewal areas with breakdown of weight calculations.



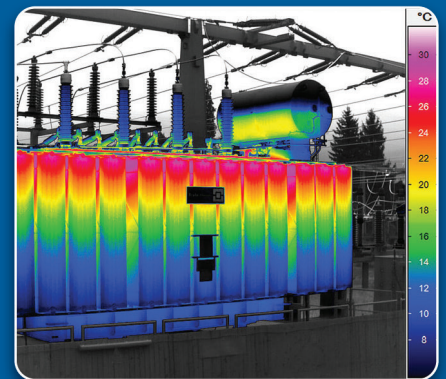
► Vibration analysis and Thermal imaging inspections

On-board identification and location of the most common mechanical faults (bearings, misalignment, unbalance, looseness) focus maintenance efforts on root cause, reducing unplanned downtime.

Overall vibration level allows quickly assess overall machine health directly from the diagnosis screen.

Detailed diagnostic reports, Repair recommendations and spectral diagrams help confirm data quality, and narrow down the root cause of failures.

Thermal imaging is used to find hot-spots that can lead to failures in electrical and mechanical installations.



► Drone Inspections

G.S Marine Services offers UAV / drone - aerial inspections in the Maritime, Offshore business and for industrial plants. Fast and safe Survey of cargo tanks, ballast tanks, void spaces, silos, cranes, wind turbines and chimneys. Made in Ultra High Definition 4k UHD. Eyes in the sky' technology opens the way to rapid, safe and repeatable inspections that will lead to long-term benefits for energy and marine operators seeking high levels of integrity, compliance, commercial advantage and Safety First.



► Ultrasonic Tightness Testing

Ultrasonic Tightness testing is applicable to hatch cover, ramps, doors, bulkheads, storage tanks or any other related with tightness testing. Sea water ingress is one of the major sources of damage to cargo resulting in expensive insurance claims. This method provides a quick and effective method of evaluating hatch seals.

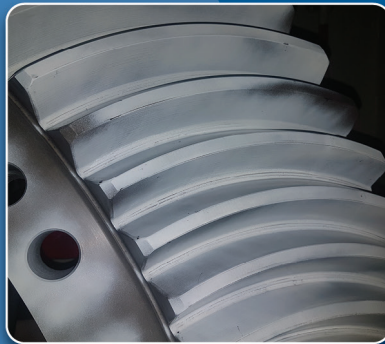




Non-destructive Testing

► Ultrasonic Testing Of Welds (UT)

With the use of flaw Detectors we determine the size of laminations in steel plates. Also, examine welded joints, location and size of defects and finally preparation of acceptable reports.



► Phased Array (UT/PA)

UT/PA is widely used in several sectors, from power generation to construction industries. It is an advanced NDT method that uses ultrasonic technique to determine component quality and detect failure such as flaws or cracks in engineered materials.

► Magnetic Particle Testing (MPI)

Magnetic Particle Inspection is a NDT method used for detecting surface and near surface flaws and defects. MPI is fast and relatively easy to apply, and surface preparation is not as critical as it is for other NDT methods.

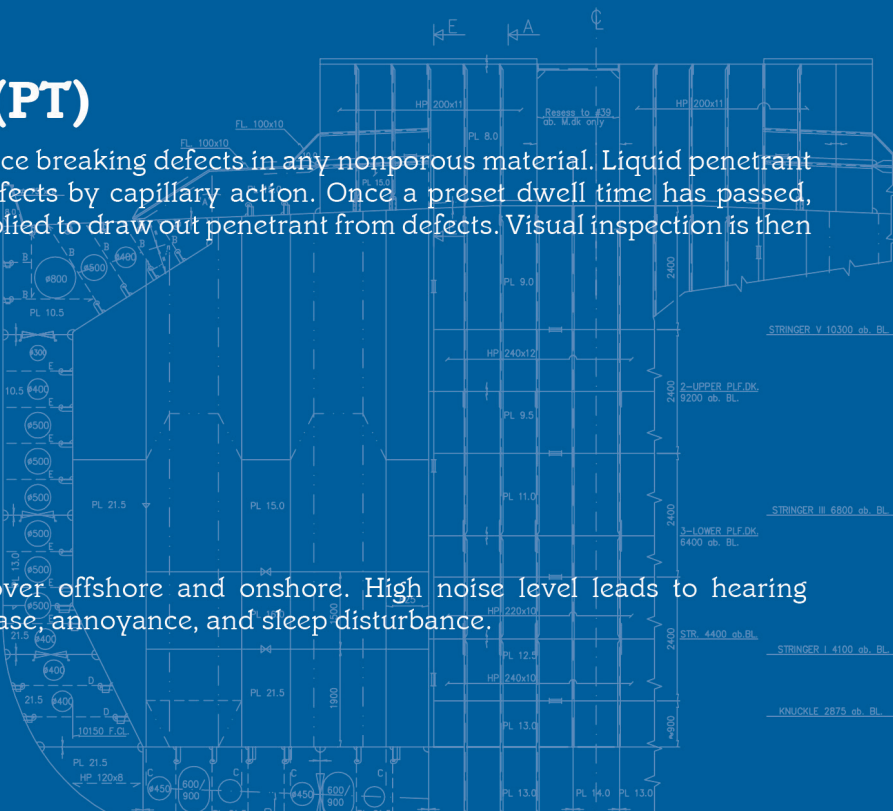
► Dye Penetrant Testing (PT)

PT testing is a NDT method used to detect surface breaking defects in any nonporous material. Liquid penetrant is applied to the surface and is drawn into defects by capillary action. Once a preset dwell time has passed, excess penetrant is removed and developer applied to draw out penetrant from defects. Visual inspection is then performed.

► Visual Testing (VI)

► Noise Survey

Noise survey is getting increased attention over offshore and onshore. High noise level leads to hearing impairment, hypertension, ischemic heart disease, annoyance, and sleep disturbance.



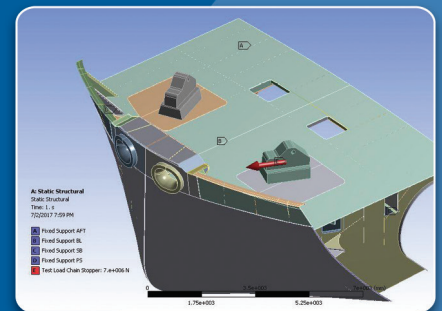


► Marine / Technical Studies

Local Strength calculations, Design and drawings of offshore structures, Panama Canal outfittings design and Installation follow up, Preparation of Technical drawings & manuals for coastal ships, Fire & Lifesaving Plans, ISM/ISPS related manuals, Trim & Stability, Emergency Towing booklets, Drawings for modification, Industrial design.

► Liferafts Inspections

Inspection of VIKING liferafts, all kind of Immersion suits & Lifejackets. Supplies of Handflares, parachutes and smoke signals.



► Technical Consultancy

- New building supervision
- Conversion supervision
- Supervision during ship repairs on dry dock

► Vessels Inspections

- Inspections (FSI) /Audits (ISM/ISPS/MLC) on behalf of Flag Administrations
- Yachts and small boat inspection
- Pre-purchase surveys
- Hull & machinery surveys
- Damage surveys
- Condition surveys

